

# **RWE Renewables UK Dogger Bank South (West) Limited**

# **RWE Renewables UK Dogger Bank South (East) Limited**

## **Dogger Bank South Offshore Wind Farms**

**Environmental Statement**

**Volume 7**

**Chapter 13 – Commercial Fisheries**

**Figure 13-1 to Figure 13-2**

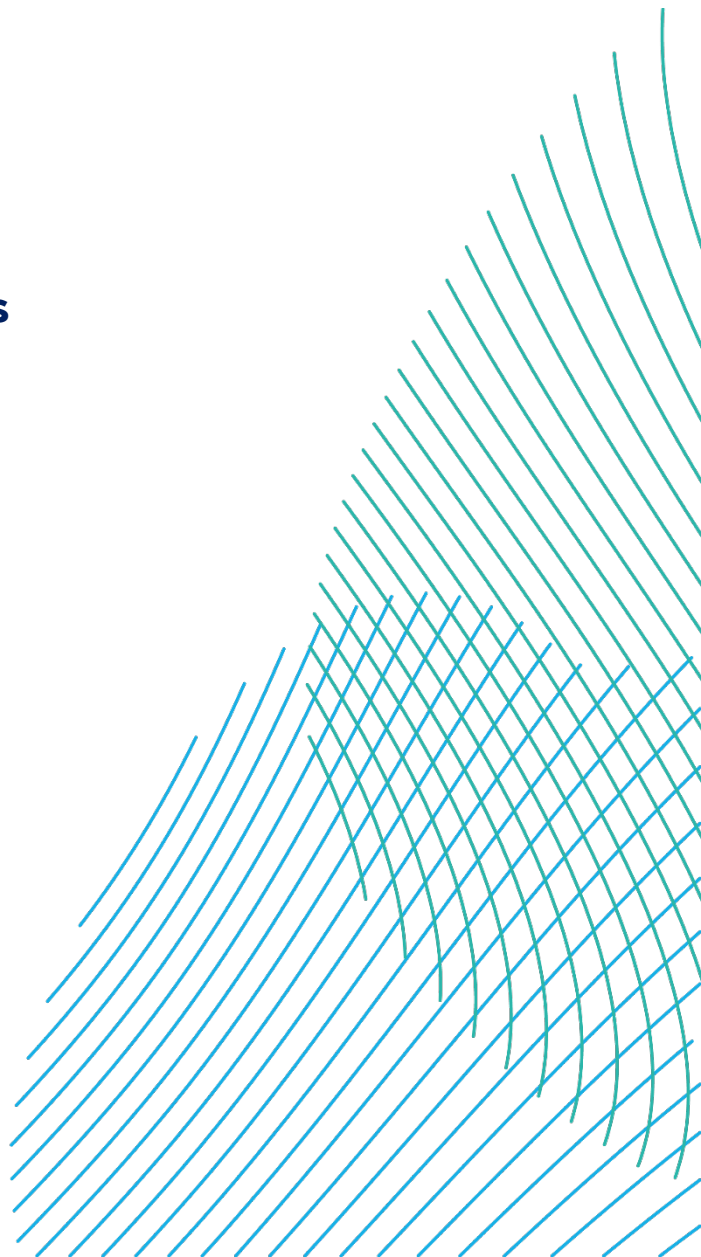
**June 2024**

**Application Reference: 7.13.1**

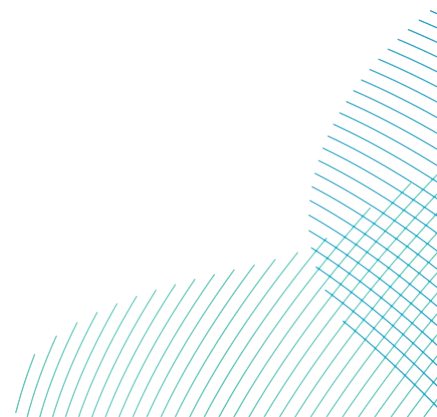
**APFP Regulation: 5(2)(a)**

**Revision: 01**

**Unrestricted**



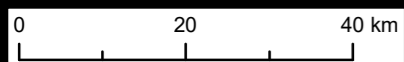
Company:	<b>RWE Renewables UK Dogger Bank South (West) Limited and RWE Renewables UK Dogger Bank South (East) Limited</b>	Asset:	<b>Development</b>		
Project:	<b>Dogger Bank South Offshore Wind Farms</b>	Sub Project/Package:	<b>Consents</b>		
Document Title or Description:	Environmental Statement – Chapter 13 – Figure 13-1 to Figure 13-2				
Document Number:	004300154-01	Contractor Reference Number:	PC2340-RHD-OF-ZZ-RP-Z-0096		
<p><i>COPYRIGHT © RWE Renewables UK Dogger Bank South (West) Limited and RWE Renewables UK Dogger Bank South (East) Limited, 2024. All rights reserved.</i></p> <p><i>This document is supplied on and subject to the terms and conditions of the Contractual Agreement relating to this work, under which this document has been supplied, in particular:</i></p> <p><b>LIABILITY</b></p> <p><i>In preparation of this document RWE Renewables UK Dogger Bank South (West) Limited and RWE Renewables UK Dogger Bank South (East) Limited has made reasonable efforts to ensure that the content is accurate, up to date and complete for the purpose for which it was contracted. RWE Renewables UK Dogger Bank South (West) Limited and RWE Renewables UK Dogger Bank South (East) Limited makes no warranty as to the accuracy or completeness of material supplied by the client or their agent.</i></p> <p><i>Other than any liability on RWE Renewables UK Dogger Bank South (West) Limited and RWE Renewables UK Dogger Bank South (East) Limited detailed in the contracts between the parties for this work RWE Renewables UK Dogger Bank South (West) Limited and RWE Renewables UK Dogger Bank South (East) Limited shall have no liability for any loss, damage, injury, claim, expense, cost or other consequence arising as a result of use or reliance upon any information contained in or omitted from this document.</i></p> <p><i>Any persons intending to use this document should satisfy themselves as to its applicability for their intended purpose.</i></p> <p><i>The user of this document has the obligation to employ safe working practices for any activities referred to and to adopt specific practices appropriate to local conditions.</i></p>					
<b>Rev No.</b>	<b>Date</b>	<b>Status/Reason for Issue</b>	<b>Author</b>	<b>Checked by</b>	<b>Approved by</b>
01	June 2024	Final for DCO Application	MarineSpace	RWE	RWE





DBS West

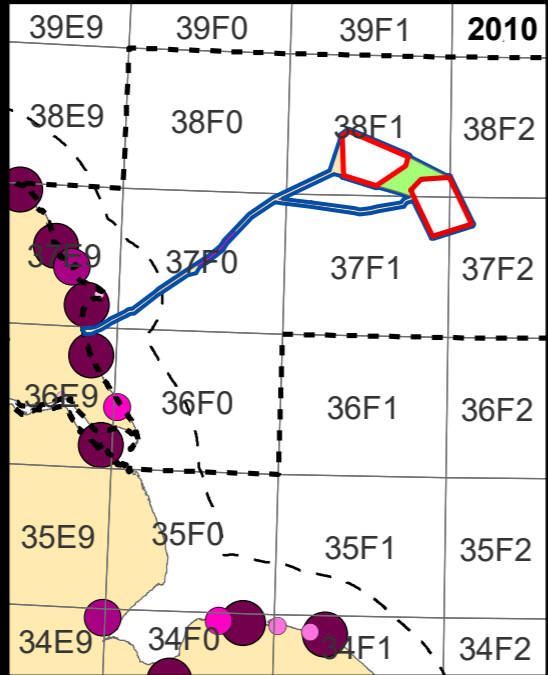
DBS East



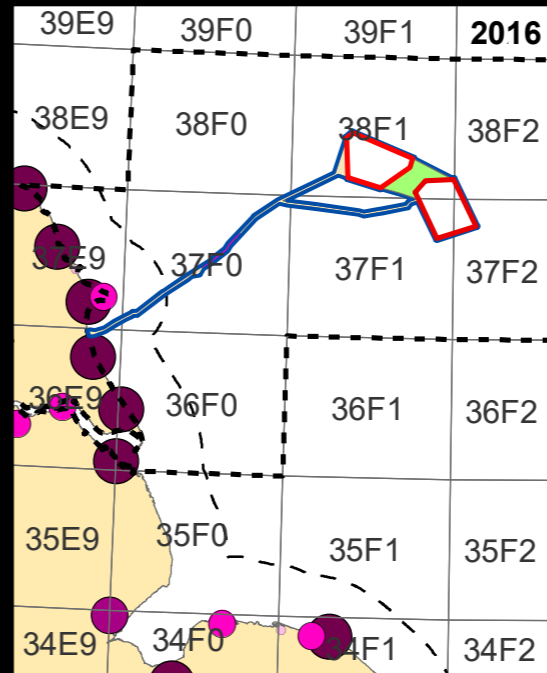
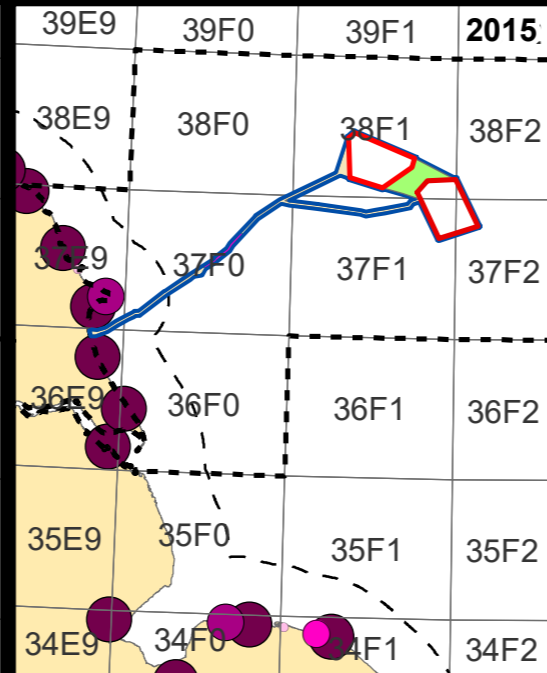
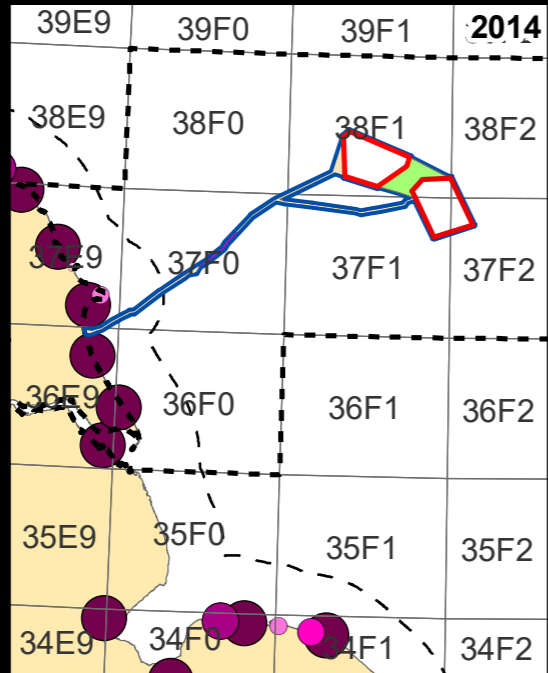
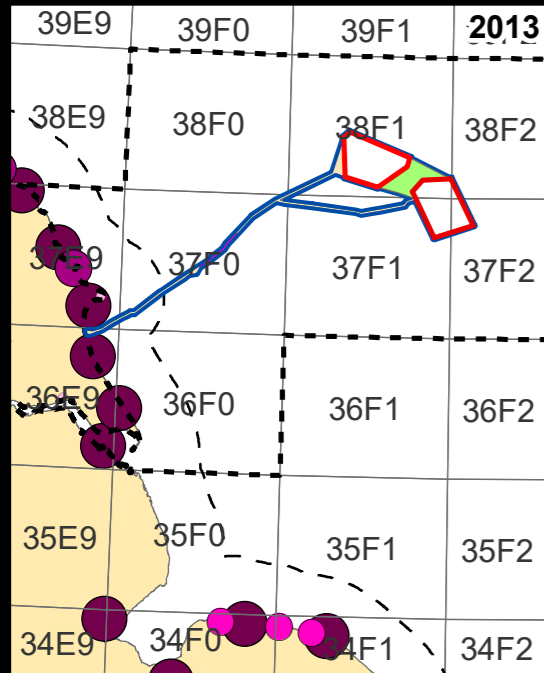
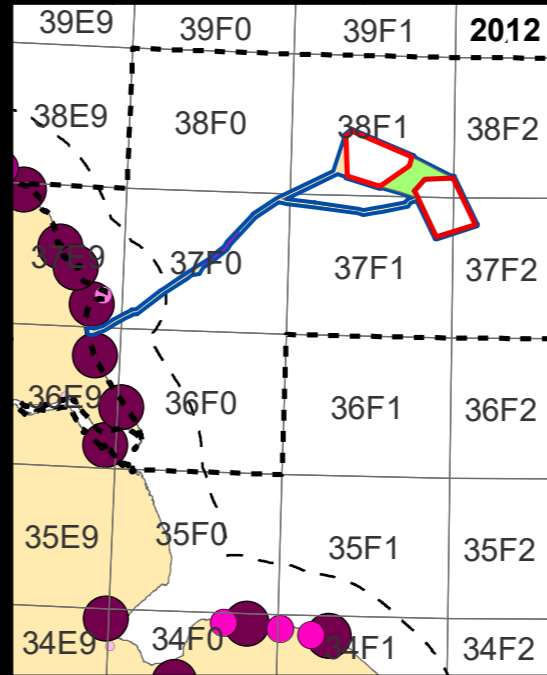


DBS West  
DBS East

2009



2011



2017

